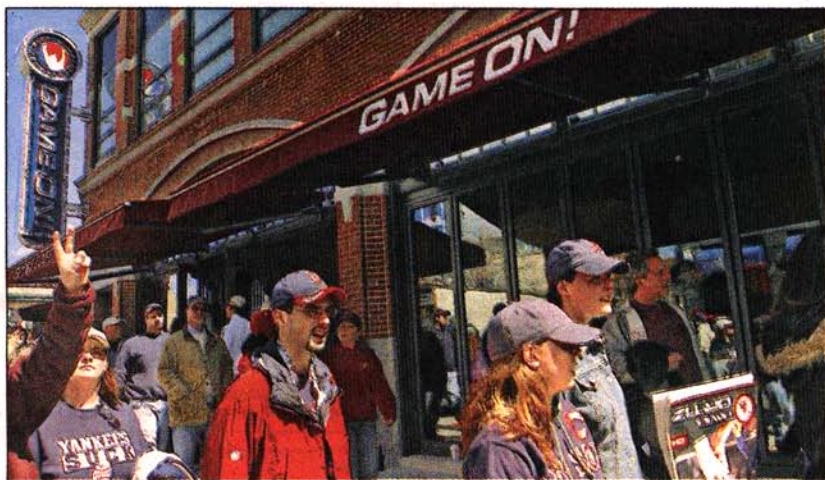


BUSINESS TODAY



THEY GOT GAME: Red Sox fans attending yesterday's home opener and World's Series celebration at Fenway Park yesterday file past a new sports bar on Lansdowne Street called 'Game On.'

OPENING DAY OFF YAWKEY WAY

New Kenmore pubs are stepping up to the plate

By JENNIFER HELDT POWELL

Opening Day?

Well, not for everybody. George Lewis and George Wright had planned to have the Foundation Lounge in Kenmore Square open for Fenway Park's big blowout yesterday. And they might have made it — if not for a lack of ammonia and a hangup at a New Jersey agricultural customs office.

Just beyond the overpass at Lansdowne Street, sports bar Game On made its Opening Day target — but just barely.

"It's always a challenge," said owner Patrick Lyons.

It's more common than not for eateries to miss opening-day goals, said Clark Wolf, president of the restaurant consultant Clark Wolf Co. "There are all these licenses in-

involved, and every city has a different bunch of quirks," he said. "It's very easy to be overconfident, especially when it comes to timing."

Though it missed yesterday's target, the Foundation Lounge, located in the Hotel Commonwealth, hopes to be open Thursday.

Lewis swears it will be worth the wait.

He had hoped to open the lounge three weeks ago, so that his staff would have had time to get ready for yesterday's Red Sox home opener.

But too many things went wrong. For instance, Lewis needed ammonia for the concrete bar top.

Also, a marble ceiling for the bar got stuck in customs because it was shipped with some vegetables.

And there were also the usual



ON DECK: George Wright, left, and George Lewis are almost ready to open their Foundation Lodge in Kenmore Square.

From Page 37

challenges of getting various approvals and finding contractors to do the work.

"There's a lot of coordination that goes on, and we just didn't get it coordinated quite right," Lewis admitted.

Once open, there will be 130 seats inside the elegant venue, plus another 20 outdoors.

Though he would like to have been open already, Lewis said he thinks the de-

New pubs near Fenway Park struggled to open on Opening Day.

lay ultimately won't matter. "You kind of forget about it in a year," he said.

Of the 50 or more openings Lyons has done in his career, Game On was one of the most significant.

It's a venue he contemplated for two years and spent one year putting together.

"There were challenges associated with creating a food environment that works for Red Sox fans and for the local neighborhood," Lyons said.

The real test is not when a restaurant opens, but how well it's received, Wolf said. "I'm interested to see which is around for next year's Opening Day," he said.

Turn to Page 38